



YACHTING
WESTERN AUSTRALIA

G U I D E L I N E S
FOR THE COORDINATION OF EVENTS
ON THE SWAN AND CANNING RIVERS

SWAN RIVER RACING COMMITTEE

CONTENTS

PAGE NO.

| | |
|-----------------------------------|----------|
| HISTORICAL BACKGROUND | 4 |
| | |
| 1.0 GUIDELINES | |
| 1.1 AIMS | 5 |
| 1.2 AUTHORITY | 5 |
| 1.3 POWERS | 5 |
| 1.4 LIMITATIONS | 5 |
| 1.5 DUTIES | 5 |
| 1.6 COMPOSITION | 6 |
| 1.7 REPRESENTATION | 6 |
| 1.8 MEMBERS | 6 |
| 1.9 MEETINGS | 6 |
| 1.10 VOTING | 6 |
| | |
| 2.0 EVENT COORDINATION | |
| 2.1 DEFINITIONS | 7 |
| 2.2 ABBREVIATIONS | 7 |
| 2.3 SEASONS | 8 |
| 2.4 RESTRICTIONS | 9 |
| 2.5 CHAMPIONSHIP PERIODS | 10 |
| 2.6 TIME BLOCKS | 10 |
| 2.7 TIME LIMITS | 10 |
| | |
| 3.0 APPLICATION PROCEDURE | |
| 3.1 APPLICATION | 11 |
| 3.2 ANNUAL EVENTS | 11 |
| 3.3 APPLICANTS | 11 |
| 3.4 FORMAT | 11 |
| 3.5 CLOSING DATES | 12 |
| 3.6 APPROVALS | 12 |
| 3.7 EVENTS PROGRAM | 12 |
| 3.8 WA AQUATIC COUNCIL | 12 |
| 3.9 ADVICE TO CLUBS | 13 |
| | |
| 4.0 COURSES AND CLUB MARKS | |
| 4.1 COURSES | 13 |
| 4.2 NEW COURSES | 13 |
| 4.3 ROUNDINGS | 14 |
| 4.4 LIST OF MARKS | 14 |
| 4.5 CLUB MARKS | 14 |
| 4.6 BUOY DESIGN | 14 |
| 4.7 INSURANCE | 15 |
| 4.8 OTHER CLUB MARKS | 16 |
| 4.9 NEW MARKS | 16 |
| 4.10 START/FINISH LINES | 16 |
| 4.11 MID RIVER STARTS | 16 |
| 4.12 STARTING | 16 |

CONTENTS

PAGE NO.

| | | | |
|-----|------------------------------|------------------------------------|----|
| 5.0 | GENERAL GUIDELINES | | |
| 5.1 | FLEET SIZE | | 16 |
| 5.2 | SPECIAL EVENT STARTS | | 16 |
| 5.3 | EVENT CONFLICT | | 16 |
| 5.4 | INCIDENT REPORTS | | 16 |
| | | | |
| 6.0 | ADMINISTRATION NOTES | | |
| 6.1 | MEETINGS | | 17 |
| 6.2 | AGENDA | | 17 |
| 6.3 | SPECIAL MEETING | | 17 |
| 6.4 | WA AQUATIC COUNCIL APPROVAL | | 17 |
| 6.5 | ADVICE TO WA AQUATIC COUNCIL | | 17 |
| 6.6 | REPORTS | | 18 |
| 6.7 | APPLICATIONS | | 18 |
| 6.8 | APPLICATION FILE | | 18 |
| 6.9 | PROGRAM | | 18 |
| | | | |
| 7.0 | APPENDIX A | NAVIGATIONAL AND RACING MARKS | 20 |
| | APPENDIX B | APPROVED DESIGN OF A CLUB MARK | 23 |
| | APPENDIX C | SWAN RIVER RACING APPLICATION FORM | 24 |

HISTORICAL BACKGROUND *

The Swan River Racing Committee was the brainchild of Dick Wittenoom during his term as President of the Yachting Western Australia. Congestion was reaching worrying proportions and action of some sort was essential.

His proposal was submitted to clubs, and accepted in to without dissent, and it brought order to a chaotic situation. Since then, the Power Yacht Association has amalgamated with YWA and the terms of amalgamation made provision for the Power Yacht Committee of WA to represent the collective interests of all river based power yacht clubs on the Swan River Racing Committee.

The stated aim of the Committee was to promote competitive sailing on the Swan and Canning Rivers to the best advantage of all competing craft.

The Committee first met on 17 October 1973 under the leadership of Dr John Baron-Hay, the then Vice-President of YWA.

The Founding Committee comprised of:

| | |
|-------------------|---------------------------------|
| Dr John Baron-Hay | Chairperson |
| Bruce Williams | South of Perth Yacht Club |
| Ray Edwards | East Fremantle Yacht Club |
| John Sibbes | Perth 14ft Sailing Club |
| Terry Gaunt | Maylands Yacht Club |
| Norman Steere | Royal Perth Yacht Club |
| Eric Fairey | Nedlands Yacht Club |
| Fred Grim | Perth Flying Squadron |
| Jim O'Grady | Royal Freshwater Bay Yacht Club |
| Ken Cook | President - YWA (Observer) |

* from notes by Dr M Surveyor, YWA Year Book, 1985/86

Chairpersons of SRRC from inception:

| | | |
|------------------------|-------|-------------|
| Dr John Baron-Hay | RFBYC | 1973 – 1974 |
| Eric Fairey (Dec) | NYC | 1974 – 1975 |
| Max Law (Dec) | MBSC | 1975 – 1976 |
| David Paris | MBSC | 1976 – 1978 |
| Dr Andrew Kingsbury | RFBYC | 1978 – 1980 |
| Jim Granger (Dec) | SoPYC | 1980 – 1983 |
| Stephen Scott | CYC | 1983 – 1984 |
| Dr Mary Surveyor (Dec) | RFBYC | 1984 – 1986 |
| Don Thomas (Dec) | RPYC | 1986 – 1987 |
| David Bayliss | RPYC | 1987 – 1991 |
| Peter Olsen | RFBYC | 1991 – 1991 |
| Geoff Frean | SoPYC | 1991 – 1992 |
| Stuart Cooksey | SoPYC | 1992 – 1999 |
| David Dewar | MBSC | 1999 – 2002 |
| John Milne | RFBYC | 2002 – 2004 |
| Rod McGregor | PDSC | 2004 – 2007 |
| Graeme Young | RPYC | 2007 - 2013 |
| Rod McGregor | PDSC | 2013 - |

1. GUIDELINES

1.1 AIMS

- 1.1.1 To promote and coordinate competitive sailing and time-trial events conducted on the Swan and Canning Rivers to the advantage of all member clubs, class associations and members.
- 1.1.2 To coordinate Yachting Western Australia (YWA) sanctioned events, with other users of the rivers, through representation on the Aquatic Council of Western Australia.

1.2 AUTHORITY

- 1.2.1 The Swan River Racing Committee (SRRC) is a standing committee appointed under the Constitution of YWA.

1.3 POWERS

- 1.3.1 The SRRC shall have the following powers:
 - To establish procedures for efficient and safe river usage for competitive sailing and time-trialling.
 - To consider applications for river space from member clubs and from other groups nominated by YWA.
 - To allocate course areas and times for approved events.
 - To approve recommendations for the use and placing of club marks and buoys.

1.4 LIMITATIONS

- 1.4.1 Amendments to the **GUIDELINES** shall be approved by the YWA Board of Management.
- 1.4.2 Any YWA affiliated member club, class association or member who feels it may have been unfairly treated may apply to the YWA Board of Management to have any decision of the SRRC reviewed.

1.5 DUTIES

- 1.5.1 To receive and coordinate applications made by an approved member ("Host Club/Association") for the use of the Swan and Canning Rivers for competitive sailing and time-trial events.
- 1.5.2 To prepare and maintain a program of all approved events for the advice of member clubs.
- 1.5.3 To coordinate YWA approved events with other river users through the WA Aquatic Council.
- 1.5.4 To consider and provide recommendations on changes proposed by relevant Authorities affecting use of the river.
- 1.5.5 To monitor the conduct of approved events and recommend to the YWA Board of Management where guidelines are required for orderly coordination.
- 1.5.6 To advise clubs where proposed competitive events are not in accordance with regulations of relevant authorities.
- 1.5.7 To maintain a register of all permanent Club marks,

1.6 COMPOSITION

- 1.6.1 The Chairperson shall be the President of YWA, or his appointee. The appointment shall be approved by the YWA Board of Management.
- 1.6.2 Member Clubs conducting sailing and time-trialling events on the Swan or Canning Rivers may each appoint one delegate.

1.7 REPRESENTATION

- 1.7.1 A delegate shall be appointed for a two (2) year term. Delegates may serve for a number of terms.
- 1.7.2 To provide effective liaison between member clubs and SRRC, delegates will preferably be members of their club's sailing committee and should be familiar with their club's courses and general competitive sailing/time-trialling activity on the river.

1.8 MEMBERS

- 1.8.1 The following clubs and associated bodies, for the time being, may appoint a delegate:
- Claremont Yacht Club
 - East Fremantle Yacht Club
 - Maylands Yacht Club
 - Mounts Bay Sailing Club
 - Nedlands Yacht Club
 - Perth Dinghy Sailing Club
 - Perth Flying Squadron Yacht Club
 - Cruising & Power Yacht Committee of YWA
 - Royal Freshwater Bay Yacht Club
 - Royal Perth Yacht Club
 - Shelley Sailing Club
 - South of Perth Yacht Club

1.9 MEETINGS

- 1.9.1 Meetings will be held monthly except that the delegates may agree to a recess but there shall be not less than six (6) meetings each calendar year.
- 1.9.2 A quorum for meetings shall be five (5) delegates plus a Chairperson.
- 1.9.3 If the appointed Chairperson, or the President of YWA, is not present then the delegates shall appoint a substitute chairperson for the meeting.

1.10 VOTING

- 1.10.1 Each delegate or proxy delegate shall have one vote. The Chairperson shall have a casting vote only.
- 1.10.2 A substitute chairperson may cast their club's vote but shall have no casting vote.
- 1.10.3 Members of other clubs and organisations affiliated with YWA may, by invitation, attend meetings as observers but they may not vote.

2. EVENT COORDINATION

2.1 EVENT DEFINITIONS

Events are classified as Recurring Events, Special Events, Championship Season Events

- 2.1.1 **Recurring Event** shall mean a weekly event on a club course and conducted within a defined time block throughout the season.
- 2.1.2 **Recurring Event Time Block** shall mean a defined period during which events may only be conducted on approved club courses.
- 2.1.3 **Special Event** shall mean any event other than a Recurring Event, or a “one-off” single event or a “multiple” event series conducted over a Special Course (**SpC**).
- 2.1.4 **Championships Event Period** shall mean a period during which International, National and State Championship events shall have priority over recurring events and special events.
- 2.1.5 An application for the conduct of a sailing event which has an Approved International, or Australian Ranking, or Grading will have “seniority” over local events, whether they are Recurring events, or Special Events.
- 2.1.6 **Provisional Approval** shall mean that river space has been provisionally approved for the event. Locations and start times to be confirmed and formalised at a later date.
- 2.1.7 Where applications for the conduct of a “special event” overlap, a formal water space sharing agreement must be determined between the competing interests.
- 2.1.8 **Formal Approval** means SRRC reserves the right to amend the “negotiated” agreement between the individual interests (Host Clubs/Associations) and to issue a “Final” approval.

WATER SPACE DEFINITION

- 2.1.9 **Club Mark** shall mean a mark placed in an approved location and maintained by a club. The mark will have a designated rounding – Port or Starboard. See additional requirements under Heading 4.
- 2.1.10 **Club Course (CC)** shall mean a course approved by SRRC on an annual or as required basis using club marks and non navigational spit posts sailed in an approved sequence.
- 2.1.11 **Special Course (SpC)** shall mean:
 - A course other than an approved club course (**CC**).
 - Any Special Course (**SpC**) may use club marks, or fixed river marks excluding Navigation Marks, for the conduct of a special sailing/boating event.
 - **Windward/Leeward (WL)** and/or **Triangle (Tri)/Trapezoidal (Trap) Courses, or “Laid Courses”** shall mean courses around temporary marks laid with respect to the prevailing wind direction for individual sailing events.
- 2.1.12 **Power Course (#)** shall mean an approved course utilised in time trialling events.

2.2 ABBREVIATIONS

2.2.1 Host Club /Committee abbreviations used in the Events Program:

Host Club:

| | |
|---------|----------------------------------|
| * CYC | Claremont Yacht Club |
| * EFYC | East Fremantle Yacht Club |
| * MYC | Maylands Yacht Club |
| * MBSC | Mounts Bay Sailing Club |
| * NYC | Nedlands Yacht Club |
| * PDSC | Perth Dinghy Sailing Club |
| * PFSYC | Perth Flying Squadron Yacht Club |

- * RFBYC Royal Freshwater Bay Yacht Club
- * RPYC Royal Perth Yacht Club
- * SSC Shelley Sailing Club
- * SoPYC South of Perth Yacht Club
- * YWA Yachting Western Australia (Inc)

YWA Standing Committees:

- * SRRC Swan River Racing Committee
- * CPYC Cruising & Power Yacht Committee

2.2.2 Courses abbreviations used in the Events Program:

- * CC Club Course
- * CC(mod) Club Course Modified – see 4.1.1
- * SpC Special Course
- * Tri/Trap Triangle/Trapezoidal Course
- * WL Windward/Leeward Course
- * "Laid" Laid Course
- * #(Power) Approved Power Yacht Course Number

Water Space abbreviations:

- * BR Blackwall Reach
- * CR Canning River
- * FB Freshwater Bay
- * KB Karrakatta Bank
- * MB Matilda Bay
- * MosB Mosman Bay
- * MWE Melville Water East
- * MWW Melville Water West
- * MAY Swan River Maylands
- * WB Waylen Bay

2.3 SEASONS

2.3.1 The SRRC Events Program is divided into Summer Sailing Season and the Winter Power Yacht Season. Defined as:

- * **Summer Sailing Season:**
From the first Saturday in October to the last Sunday in April. Recurring time blocks apply to weekend periods, 1300 – 1630hrs, midweek – Wednesday, Thursday and Friday, 1400 – 1800hrs, and twilight sailing periods (as adopted by member Clubs.

Preference will be given to sailing events at other times.

- * **Winter Winter Power:**
From the first Saturday in May to the last Saturday in September. A "regular" time period will apply to each Saturday afternoon (power time-trial) 1330-1700hrs, with the proviso that some afternoon events will be reallocated (when required) to morning periods between 0900 to 1230 hours.

Preference will be given to power events at other times.

Winter Sailing Season

From the first Saturday in May to the third Sunday in September.

Power events have preference during the “winter” season.

Any unallocated times not utilised by power events will be available for sailing events.

CPYC to Note: Winter Sailing Events will be co-ordinated and approved by SRRC at the May meeting.

2.3.2 Winter Sail Events are classified as:

2.3.2.1 **Midweek** (adopt as Recurring Event), and **Winter Series/Frostbite or Winter Special Events**

- **A “Winter Series” (or “Frostbite Races”)**
- Historically, these activities have always been conducted on a Sunday.

These “**regular**” (and traditional) sailing activities are to be sailed using Club Courses (CC) around Club Marks during AM and/or PM time blocks, on nominated dates. The chosen dates will be at approximately two (2) weekly intervals.

Winter (“Special Course”) Events

- Approved events which will be sailed using **Special Courses** (SpC). That is to say ... “Laid”, W/L, (or other).
- The Saturday AM time period is subject to an individual Application to YWA – SRRC..
- Sunday dates will be alternate to those “regular” fortnightly Sunday sailing dates allocated to CC events. Time periods for AM and PM apply.

2.3.3 SRRC will determine and publish the Sunday dates which apply to the “Regular” Winter/Frostbite Club Course (CC) event format.

The publication will also display the alternate fortnightly (Sunday) dates available for the “Alternate” Special Course (SpC) format.

Applications for events which are applicable to either of the two sailing formats will be considered at the May committee meeting.

2.4 RESTRICTIONS

2.4.1 During the “Summer” Sailing Season, approved Recurring Events may not be conducted in nominated “Championship” event times.

2.4.2 All events during the “Championship” periods are subject to Special Event application.

2.4.3 Twilight Events which commence after 1800 hours are exempt. Clubs should refer to the SRRC Programme and Aquatic Council Calendar to ensure that the river waters will be “clear” before commencing their sailing activity. During the December - January period some Championship events might continue until DARK.

- 2.4.4 Any unallocated times, or water space areas within the river not being utilised by approved “Championship” events will be available for sailing events. SRRC reserves the right to accept or decline, or impose “conditional approval”, to any application submitted.

2.5 CHAMPIONSHIP PERIODS

- Championship Season From the last Monday prior to Christmas Day to 1200 hours on the second Saturday after New Year’s Day.
- Labour Day Weekend Saturday to Monday inclusive.
- Easter Weekend Friday to Monday

2.6 TIME BLOCKS

2.6.1 Time blocks for the summer and winter periods shall be as follows:

| | | |
|-------|---------------|--|
| 2.6.2 | Summer | Weekend, sailing (including pre start “assembly” time) |
| | * | 0800 - 1300 hours (SpC) |
| | * | 1300 – 1630 hours (CC) |
| | * | 1630 – Dark (SpC) (river must be “clear” to commence the event – see Item 2.6.2) |
| | * | Midweek, sailing:- |
| | * | Recurring Events (CC) 1400 – 1800 hours |
| | * | Special Events (SpC) As requested |
| | * | Twilight sailing (CC) 1730 – dark |
| | * | Night Races (SpC) As requested |
| 2.6.3 | Winter | Saturday, Power 1400 – 1700 hours |
| | * | Saturday (AM) 0800 – 1300 hours |
| | * | Sunday (AM/PM) 0800 – 1700 hours |

2.7 TIME LIMITS

2.7.1 Recurring Events

- Races shall be started without unreasonable delay and courses shortened as required to achieve finishing times, generally within the nominated periods.

2.7.2 Special Events

- Morning races, which are followed by a recurring event time block, shall have a time limit of 1300 hours and all boats must be clear of the river waters by that time.
- Late afternoon/evening races shall not start before 1630 hours and only then provided the sailing area is clear of recurring event racing.

3. APPLICATION PROCEDURE

3.1 APPLICATION

- 3.1.1 An application is required for all scheduled racing events.
- 3.1.2 No application is required for training activities but it is recommended that Clubs support the arrangement so that the practice of multiple participation/usage is reported to Aquatic Council for inclusion into the Aquatic Calendar. This arrangement will identify the “activity” as an Organised Event under the statutory provisions of *the Navigable Waters Regulations 1958*.
- 3.1.3 Minor unscheduled sailing/boating activity which is undertaken outside the administration and support of a Club does not need to be notified to SRRC.

3.2 ANNUAL EVENTS

- 3.2.1 Recurring event programs shall be applied for annually. Opening and closing days which form part of a club’s recurring event program do not require a specific application ... however, clubs are encouraged to apply for opening and closing days as special events. This will then identify these events in the published YWA events program.
- 3.2.2 Events, which are approved as special events, do not automatically become annual events.
- 3.2.3 Events which might be undertaken by a Club on a “regular or repetitive” annual basis are **not** “Recurring” sailing/power events.

3.3 APPLICANTS

- 3.3.1 Applications shall be accepted from Clubs affiliated with YWA.
- 3.3.2 Applications from Associations will only be accepted through a host club.
- 3.3.3 Special interest groups, affiliated with YWA, may apply to YWA/SRRC for approval to make direct application.
- 3.3.4 Applications for power yacht time trials conducted within the “Power Season”, and “organised” social events which use the river waters and are held at any time within the annual calendar shall be submitted through the Cruising & Power Yacht Committee of YWA to SRRC for “consideration and approval”.

Please note:

- This requirement is necessary to record any organised events into the WA Aquatic Council calendar.
- Events which are conducted by individuals, and/or groups of power boat owners acting outside the administration of CPYC do not need to be reported.

3.4 FORMAT

- 3.4.1 Applications should be on the SRRC Application Form and provide the following information:
 - Name of Event
 - Host Club
 - Class and number of craft competing
 - Type of Event – “Recurring” or “Special” (MANDATORY REQUIREMENT) - Cross out whichever does not apply.
 - Date, start time, course and water space for each individual event. All water space areas (See: Item 2.2.2) which will be utilised by the event need to be defined. (WA Aquatic Council/DoT Marine Safety requirement)
 - Finishing time must be stipulated

3.5 CLOSING DATES

- 3.5.1 Programs are prepared on an October to September basis for each year.
- 3.5.2 SRRC meetings are held on the last Monday of each month. Applications will be received up until fourteen (14) days prior to the monthly meeting. Late applications MAY be deferred to the following month.
- 3.5.3 Event closing dates are as follows:
- Championship Season (2 year lead-time) February - March*
 - Labour Day and Easter Periods April
 - Recurring Events March
 - Winter "Power" Events February
 - Special Events – Summer Season April
 - Special Events – Winter Season - (the next year) May
 - Club Course Changes (See: Item 4.2.1) May
- *Note that approvals for Championship events are given as "Provisionally Approved". Final times and water space are confirmed by Formal Approval at either the October or November meeting of SRRC, 14 or 13 months prior to the relevant event.

3.6 APPROVALS

- 3.6.1 Applications will be considered by SRRC at the first meeting after the nominated closing date. Applications received by the closing date will be treated equally.
- 3.6.2 Applications received after the closing date will be considered only if water space is available and without unreasonable compromise to events previously programmed.
- 3.6.3 Applications received later than 6 weeks prior to the proposed event date may not be considered due to the need to meet time constraints imposed by Department of Transport (DoT)/Marine Safety and WA Aquatic Council.

3.7 EVENTS PROGRAM

- 3.7.1 The SRRC Events Program published by YWA collates and documents Recurring and Special Events, for both sail and power, from the current date to the end of the reporting periods and includes Championship events as endorsed and supported by SRRC or YWA Board of Management.
- 3.7.2 YWA will display this information on the website:-
<http://www.wa.yachting.org.au/site/yachting/wa/downloads/Swan%20River/Swan%20River%20Programme%20-%20August%202012.pdf>

3.8 WA AQUATIC COUNCIL

- 3.8.1 All applications submitted and approved by Swan River Racing Committee are subject to confirmation by the WA Aquatic Council, which coordinates all "organised" river-based competition to comply with the *Navigable Waters Regulations 1958* (under the provisions of the Marine Act).
- 3.8.2 WA Aquatic Council meets monthly.

3.9 **ADVICE TO CLUBS**

- 3.9.1 Event Applications submitted to YWA will be considered by the SRRC in accordance with the Guidelines, and take into account the principle of fairness and equity including generalised safety matters.
- 3.9.2 The Committee's decision will be conveyed within the formal Minutes of the Meeting. The Minutes will record the event status as:-
- **APPROVED** Event approved – included in program.
 - **APPROVED AS AMENDED** Event approved subject to amendments notified – included in program. Club may reapply with a new proposal if they so desire.
 - **NOT APPROVED** Event not approved and therefore not included in program. Club to make a new application for an alternate date/time/water space.

4. **COURSES AND CLUB MARKS**

4.1 **COURSES**

- 4.1.1 Number of Club Courses (CC)
- Each Club may propose a maximum of 4 courses for each separate division or class fleet.
 - A lap omitted from a course for a shortened course or an alternative starting location does not count as an extra course.
 - Alternatively Clubs may combine courses for a number of fleets provide the common course group does not exceed the aggregate of the allowance for individual fleets.
 - Yacht Clubs need to be mindful that any process that amalgamates two or more Fleets (Divisions) into one, or establishes a larger group of competitors, may create a concentration of boats which might impact upon the safety of their competitors (or other Club fleets), and raise the interaction and potential for conflict, or collision at any prominent race rounding mark within the river waters.
 - Yacht Clubs are required to investigate and prudently consider their actions before implementation. Prior approval of SRRC is recommended.
- 4.1.2 Special Courses (SpC)
- Any sailing course which is not an approved Club Course (CC) is a "Special Course" (SpC). SpC using laid marks will generally only be approved outside recurring event time blocks.
- 4.1.3 Course Area Sharing
- Due to space restrictions SRRC is not always able to allocate an exclusive sailing area for Special Course events. The Committee may suggest that event areas within the river waters might need to be shared between competing interests.

4.2 **NEW COURSES**

- 4.2.1 Applications for New and Amended Courses
- Course changes and applications for new courses will only be considered on an annual basis in May.

- Applications **MUST** be made and submitted in time to be acknowledged and recorded by YWA as part of the meeting agenda of the April meeting. See Item 3.5.3
- Applications will sit on the table for consideration/investigation by the Committee before being formally considered at the May meeting date.
- Late applications will be processed by the Committee, at its absolute discretion, or when practicable.
- Applications for any “changes” at other times may not be approved.
- All applications submitted to the Committee **MUST** include:-
 - a) A sequential narrative, or word description of the proposed course which will include:
 1. The name of the rounding mark
 2. The direction of the rounding, and
 3. The official number of the buoy.
 - b) A map of the SWAN/CANNING River which depicts the course along with the direction the boat travels to transit the course.

4.2.2 Crossing Tracks

- To minimise conflict, courses will not be approved which include turns that require yachts leaving a rounding mark to cross the path of those yachts arriving at the mark.

4.3 ROUNDINGS

4.3.1 The correct rounding is mandatory for all river marks and navigation aids including race rounding buoys.

4.4 LIST OF MARKS

4.4.1 SRRC maintains a register of all approved Club Marks listing the name, number, rounding direction, Club or authority responsible for the administration and maintenance, identification characteristics and location of GPS coordinates. (refer Appendix A – Race Rounding Marks.

4.5 CLUB MARKS

4.5.1 The placement and maintenance of Club Marks is the responsibility of the individual Clubs.

- All yacht racing/rounding marks are required to conform to the approved standard which has been established by the Department of Transport (DoT) – Marine Operations/ Navigational Safety, in cooperation with YWA.
- Under the requirements of the State administration (DoT and Marine Act), a Club Mark will convey and communicate a message to Mariners (river users) to indicate a requirement of a “special mark” under the IALA conventions.
- The Mark **MUST NOT** signify any detail, marking or information which could be interpreted as an aid to navigation of the river waters

4.6 BUOY DESIGN

4.6.1 The following notes are submitted as compulsory guidance to Yacht Clubs for the placement, and maintenance of any existing Club Mark.

This statement of guidance will also apply to the creation of new marks which might be approved by DoT, or Swan River Trust (SRT):-

- Manufacture
Contact: Eagle Rota Mouldings
26 Hampton Street,
MANDURAH. WA

- Shape, Colouring
All marks will comply with the Yellow colouring determined under the IALA Convention and approved by Department of Transport.

The mark will be a spar buoy and of a design equal to the approved standard, adopted by YWA and authorised by Transport. A copy of the Approved design is attached to the Guidelines ... see Appendix: B.

All marks will be consistent, and uniform.

- Start/Finish Line marks/buoys
Individual Yacht Clubs will establish the design (or shape), and colouring of any mark/buoy used to define a Start/Finish line. The Club Sailing Instructions (SI's) will define the individual characteristics of the Mark/buoy adopted by the Club.

SRRC recommends that any design which is adopted should be distinctive to avoid confusion with other race rounding buoys placed within the river waters.

- Visibility

A Club Mark needs to be maintained on a regular basis (annual) to display a high standard of visibility. This requirement is seen as being necessary to support the function required by our sport, and to ensure that the mark is not impacted by powered craft/vessels using the waters of the Swan and Canning River(s).

- Numbering
 - Marks should display an identity number large enough to be identified from a reasonable distance. A body height of 150mm is recommended.
 - Suffix letters, or Numbers may be smaller than 150 mm.
 - All numbers and letters should be identifiable without the need to round the buoy.
 - Where possible marks shall be numbered using IALA conventions, ie; even numbers for a Port rounding, odd numbers for Starboard.
Functional Requirement.
 - Those Club Marks which are required to be rounded on the **PORT HAND** will display **RED** numbering/letters.
 - Club Marks which are required to be rounded on the **STARBOARD HAND** will display **GREEN** numbering/letters.

4.7 INSURANCE

- 4.7.1 Clubs are required by State Administration (DoT) to maintain public liability insurance cover for their marks.

4.8 OTHER CLUB MARKS

- 4.8.1 Clubs may incorporate any Club Mark in courses submitted to SRRC for approval.

4.9 NEW MARKS

- 4.9.1 New marks and the relocation of existing marks require Department of Transport (DoT) and Swan River Trust (SRT) approval.
- 4.9.2 Requests shall be submitted to YWA for consideration, and referral to SRRC.
- 4.9.3 Any recommendation by SRRC to YWA to support a proposal for alteration and repositioning of an existing mark will initiate a formal application to the appropriate authorities through the Executive Officer of YWA.

4.10 START/FINISH LINES

- 4.10.1 The Racing Rules of Sailing (RRS) recommend that the position of a start/finish line be identified by an orange flag.

4.11 MID-RIVER STARTS

- 4.11.1 Mid-river starts shall be conducted from designated club start locations and commence as soon as practicable after the scheduled start times.
- 4.11.2 Clubs should be aware that delaying club fleet starts and relocating start lines causes significant interference to other club fleets and disrupts the planned interaction of fleets.

4.12 STARTING

- 4.12.1 Race committees should endeavour to delay hoisting the orange flag until it becomes necessary to restrict other fleets from passing through the line during starts and finishes. Likewise race committees should remember to remove the orange flag immediately after the last starting or finishing boat has cleared the line. Once a line is no longer in use, the water should be opened up for all to use.

5. GENERAL GUIDELINES

5.1 FLEET SIZE

- 5.1.1 A club fleet shall comprise a minimum of 6 (six) boats registered for racing.

5.2 SPECIAL EVENT STARTS

- 5.2.1 Where special events are scheduled after recurring event time blocks and prior to an appropriate commencement time to be "on station", starters are requested to locate the Race Committee/Start Boat in an area where assembling competitors will not interfere with Club fleets which are still racing.

5.3 EVENT CONFLICT

- 5.3.1 Clubs should notify SRRC of any conflict between competing fleets (Classes/Divisions) which need to be considered to ensure that competitive fairness, and prudent safety provisions will prevail within the river waters.

5.4 INCIDENT REPORTS

- 5.4.1 Competitors are invited to advise or report to Department of Transport, Marine Safety, details of any incident occurring on the Swan or Canning Rivers between any Club registered boat and other river users.

- 5.4.2 Such reports should provide detail of date, time, other boat's registration, identification of the person in charge and details of the incident.
http://www.transport.wa.gov.au/mediaFiles/mar_ms_mir-0212a.pdf
- 5.4.3 Department of Transport will investigate these reports.
- 5.4.4 This arrangement is not a substitute for protests lodged under the Racing Rules of Sailing.

6 ADMINISTRATION NOTES

[For use by SRRC Committee Members and YWA Office only]

6.1 MEETINGS

- 6.1.1 Meetings are programmed for the last Monday in each month. This provides the latest convenient date for processing the month's applications. Meetings that are scheduled and fall on a designated Public Holiday will be postponed to the following day.
- 6.1.2 Meetings commence at 1930 hours, unless otherwise agreed by SRRC Committee Members.

6.2 AGENDA

- 6.2.1 Meetings will generally be conducted with the following agenda:
- Present /Apologies
 - Approval of previous Minutes
 - Business Arising
 - Correspondence and Applications (date of event order)
 - General Business

6.3 SPECIAL MEETING

- 6.3.1 Meetings may be convened from time to time to consider matters of special interest, such as the coordination of special events – ie. National season events.
- 6.3.2 Representation from host clubs, fleets involved and SRRC delegates will be invited to assist in the liaison between these interested parties.

6.4 WA AQUATIC COUNCIL APPROVAL

- 6.4.1 Subsequent to each SRRC meeting formal approval of WA Aquatic Council is required for new and amended events. Advice is provided to the WA Aquatic Council meeting by the YWA delegate or forwarded to the Secretary in writing.

6.5 ADVICE TO WA AQUATIC COUNCIL

- 6.5.1 Advice to WA Aquatic Council is provided by a schedule sorted in date order with the following information:
- Amended, New or Cancelled events
 - Sail or Power
 - Start and Finish Time
 - Club
 - Course, Area/Type
 - Event Name
 - Conditions imposed

6.6 REPORTS

- 6.6.1 The Chairman of SRRC reports directly to the President of YWA (or his appointed representative) who reports monthly to the Board of Management.

6.7 APPLICATIONS

- 6.7.1 The movement of application and approval correspondence between Committee and clubs is simplified by the use of the standard Application Form (Appendix C).
- 6.7.2 Application Forms will be retained by YWA. Yacht Clubs are invited to contact the office to discuss any issues which arise concerning the application and the administration taken by SRRC.

6.8 APPLICATION FILE

- 6.8.1 A database will be maintained by YWA to track all applications.
- 6.8.2 The file will record all information as listed below on all applications together with history of subsequent negotiations with clubs on amendments, approvals and passage through WA Aquatic Council.
Details of Event and Applicant:

- Date of Receipt
- Meeting Agenda No. Serial number recorded on entry to correspondence file
- Event Name Abbreviated to common name, approximately 25 letters
- Conducting Club Use club initials only
- SRRC Event No. Serial number entered by computer
- Class of Craft
- Number of Craft
- Type of Event Recurring/Special
- Contact Name, Phone – work/home

Details of Each Event (a Heat is an event):

- Day
- Date Format as dd/mm/yy
- Heat No. H1, H2 etc., R1, R2 for resail
- Start Time 24 hour time – eg, 1300
- Finish Time 24 hour time – eg, 1730
- Course Use standard abbreviations
- Area Use standard abbreviations
- Conditions Abbreviate note - Minute restrictions

Approval, Amendment or Denial:

- Approved Blank
- Under Consideration Q
- Denial (Not Approved) D

Movement of Application/Approval

- WA Aquatic Council Date of meeting, approval or otherwise

6.9 PROGRAM

- 6.9.1 The SRRC Recurring and Special Events Program records all approved events. A draft program will be prepared for each meeting of SRRC in event date context, incorporating new and amended events, for consideration.

- 6.9.2 The status of new entries is indicated by symbols:
- N New entry for consideration.
 - Q Application under consideration, or subject to amended application.
 - Blank Approved.

APPENDIX A

CLUB MARKS (INCLUDES BUOYS AND NON MNAVIGATIONAL SPIT POSTS)

Page 1 of 3

| NAME | No. | ROUNDING | DESCRIPTION | COORDINATES | VISUAL POSITION | CLUB |
|----------------------|-----|----------|---|-----------------------------|--|-------|
| Addison Buoy | 63 | S | | 31:59.336 S 115:50.762 E | S - Heathcote Inner Black (24) & 6PM radio mast E - Extension of Gardiner St | MBSC |
| Aerodrome Buoy | | S | | | | MYC |
| Anderson Buoy | 62 | P | | 31:59.76 S 115:50. 81 E | | SoPYC |
| Applecross Spit | 39 | | Spit post | | | DoT |
| Armstrong Buoy | 32 | P | | 32:00.07 S 115:48.87 E | NE - RPYC & MWB building SE - Applecross Spit (39) & SoPYC | RPYC |
| Armstrong Spit | 36 | S | Spit post | | | DoT |
| Armstrong Spit West | 35 | | Spit post, timber, top mark | | | DoT |
| Attadale Spit | | S | Pile, steel, white | | | PYC |
| Bartlett Buoy | 39 | S | | | Off NYC start line | NYC |
| Bateman Day Buoy | 9a | P | | | | EFYC |
| Bicton Spit | 42 | | Spit post | | Leading beacon to Bicton jetty | DoT |
| Billy Goat Day Buoy | 9b | P | | | | EFYC |
| Bishop Buoy | 74 | P | | 31:59:740 S 115:47.110 E | SW - Black Spit (54) & Keanes Pt jetty NW/SE - Pt Resolution Spit & Claremont jetty | CYC |
| Black Spit | 54 | | Spit post, steel, white, top mark | | | DoT |
| Blackwall Buoy | 11 | P | | | | EFYC |
| Bond Spit | 38 | P | Spit post, timber | | | DoT |
| Brewery Buoy | 18 | P | | 31:58.24 S 115:50.08 E | | PDSC |
| Bricklanding A | 33a | S | | 32:00.71 S 115:47.91 E | NW - Pt Resolution Spit & pine tree, Claremont hill | RFBYC |
| Bricklanding B | 33b | S | | 32:00.67 S 115:47.84 E | | RFBYC |
| Bricklanding Spit | 52 | | Spit post, timber | | | DoT |
| Bunbury Bridge | | P/S | | | | MYC |
| Burnside Buoy | 21 | P | | | | CYC |
| Burnside Day Buoy | 21b | P | | | | CYC |
| Burnside Spit | 58 | S | Spit post, steel, white, top mark | | | DoT |
| Castle Hill Buoy | 10 | P | | | | EFYC |
| Chidley Day Buoy | 11a | S | | | | EFYC |
| Chidley Point Spit | | | Spit post, steel, top mark, red light | | | DoT |
| Claremont Buoy | 23a | P | Round post, white | 31:59:60 S 115:46:970 E | | CYC |
| Claremont Spit | 56 | | Spit post, steel, white, top mark | | | DoT |
| College Buoy | 23 | S | | 31:59:580 S 115:47:060 E | | CYC |
| Como Buoy | 65 | S | | 31:59.80 S 115:50.87 E | S - Heathcote Inner Red (25) & SoPYC start box E - Extension of Eric St | RPYC |
| Como Buoy (Winter) | 65b | S | | 31:59.97 S 115:60.87 E | SE - Heathcote Dolphin (22) & Taylor Woodrow N/S - Rocks Spit (11) & Heathcote Hospital | RPYC |
| Concrete Spit | 15 | S | Spit post, concrete, starboard top mark | | | DoT |
| Cornish Spit | | | Spit post, steel, white, top mark | | | DoT |
| Crawley Buoy | 45 | P | | | N - UWA boatshed & QE 2 Hospital chimney W - Extension of two piles near shore | RPYC |
| CYC Outer Start Mark | 21a | P/S | | | | CYC |
| Dalkeith Spit | 28 | | Spit post | | | DoT |
| Dee Road Buoy | 38 | P | | 32:00.67 S 115:49.45 E | E - Extension Dee Rd N - Bond Spit (38) & eastern most Crawley tower | NYC |
| Deepwater Spit | 37 | S | Spit post, timber | | | DoT |
| Dinghy Buoy | 46a | S | | 31:59.00 S 115:49.58 E | | PDSC |
| Dolphin East Buoy | 42b | S | | 31:59.65 S 115:49.80 E | | SoPYC |
| Dolphin West Buoy | 42a | S | | 31:59.75 S 115:49.55 E | E - Outer Dolphin & Pagoda overpass N - MBSC & western most Crawley tower | RPYC |
| Dome Buoy | 30 | P | | 31:00.27 S 115: 48.37 E | | RFBYC |

APPENDIX A

NAVIGATIONAL AND RACING MARKS

Page 2 of 3

| NAME | No. | ROUNDING | DESCRIPTION | COORDINATES | VISUAL POSITION | CLUB |
|-----------------------|-----|----------|--|----------------------------|--|-------|
| Dunn Mark | 36 | P | | 32:00.93 S 115:49.18 E | E - Extension Nairn St S - Waterstrom Spit & Alfred Cove radio mast | MBSC |
| EFYC Outer Start Mark | 10a | P | | | | EFYC |
| Foam Buoy | 55 | S | | 31:57.74 S 115:50.44 E | N - Foam Spit (18) & Knot Spit (14) W - Outer Dolphin (17) & NYC | RPYC |
| Foam Buoy (Winter) | 55a | P | | 31:59.51 S 115:50.32 E | SW - Outer Dolphin (17) & Lucky Bay Spit (51) NW - NYC 261 degrees | RPYC |
| Foam Spit | 18 | S | Spit post, timber, top mark, green light | | | DoT |
| Frenchmans Buoy | 60 | S | | 32:00.24 S 115:15.30 E | | SoPYC |
| Gallop Buoy | 39b | P | | | Off Gallop House | NYC |
| Garden Spit | 27 | | | | | DoT |
| Hall Mark Buoy | 41a | P | | 31:59.60 S 115: 49.31 E | E - Nedlands Spit(26) & Sampsom Spit (19) N - Old Nedlands Baths (Jo-Jo's) 315 degrees | SoPYC |
| Heathcote Dolphin | 22 | | Spit post, timber, top mark, light | | | DoT |
| Heathcote Inner Black | 24 | | Spit post, timber, top mark, light | | | DoT |
| Heathcote Inner Red | 25 | | Spit post, timber, top mark | | | DoT |
| Heathcote Outer Black | 21 | | Spit post, timber, top mark, light | | | DoT |
| Heathcote Outer Red | 23 | | Spit post, timber, top mark | | | DoT |
| Heron Buoy | 52b | P | | 31:58.42 S 115:50.08 E | | PDSC |
| Inner Dolphin | 16 | P/S | Spit post, timber, top mark light | | | DoT |
| Karrakatta Spit | | | Pile, timber, light | | | DoT |
| King Buoy | 61 | S | | 31:59.87 S 115:50.70 E | | SoPYC |
| Knot Spit | 14 | S | Spit post, timber, top mark, light | | | DoT |
| Knot Buoy | 52a | P | | | S - Concrete Spit (15) & Heathcote radio aerial W - Knot Spit (14) & RPYC | RPYC |
| Knot Post | 2 | | | | | DoT |
| Lucky Bay Buoy | 35b | P | | 32:00.83 S 115:48.22 E | S - Extension Roberts Rd NW - Bricklanding Spit (52) & Pt Walter Spit | RFBYC |
| Lucky Bay Spit | 51 | P | Spit post, steel, white | | | DoT |
| Martin Buoy | 69 | P | | 32:00.41 S 115:51.02 E | | SoPYC |
| Matilda Buoy | 44 | P/S | | | SE - Knot Spit(14) & Como jetty SW - Sea Scouts jetty & Alfred Cove radio aerial | RPYC |
| Maylands Buoy | | S | | | | MYC |
| MBSC Club Buoy | 44c | P | | | SW - Sea Scouts jetty & Alfred Cove radio aerial N - Boat shed & east side of Strathern Units | MBSC |
| MBSC Finish Line | | | | | Positioned, as required, relative to MBSC marina | MBSC |
| Middle Spit | 55 | S | Spit post, steel, white, top mark | | | DoT |
| Miller Buoy | 28 | P | | 32:00.64 S 115:47.79 E | W - Garden Spit (27) & north end Pt Walter jetty | RFBYC |
| Mosman Buoy | 14 | P | | 32:00.29 S 115:46.95 E | | RFBYC |
| Mt Lyall Buoy | 9 | S | | | | EFYC |
| MYC Club Buoy | | P/S | | | | MYC |
| North Pt Walter Spit | 52 | P/S | Spit post, steel, white, top mark, light | | | DoT |
| North Pt Walter Buoy | 26a | P | | 32:00.29 S 115:46 95 E | W - West Pt Walter Spit (53) & Smith's boat shed | CYC |
| Nedlands Baths Buoy | 41c | P | | | Off Jo-Jo's restaurant | NYC |
| Nedlands Buoy | 41b | S | | | Inshore of Nedlands Spit(26) | NYC |
| Nedlands Spit | 26 | S | | | | DoT |

APPENDIX A

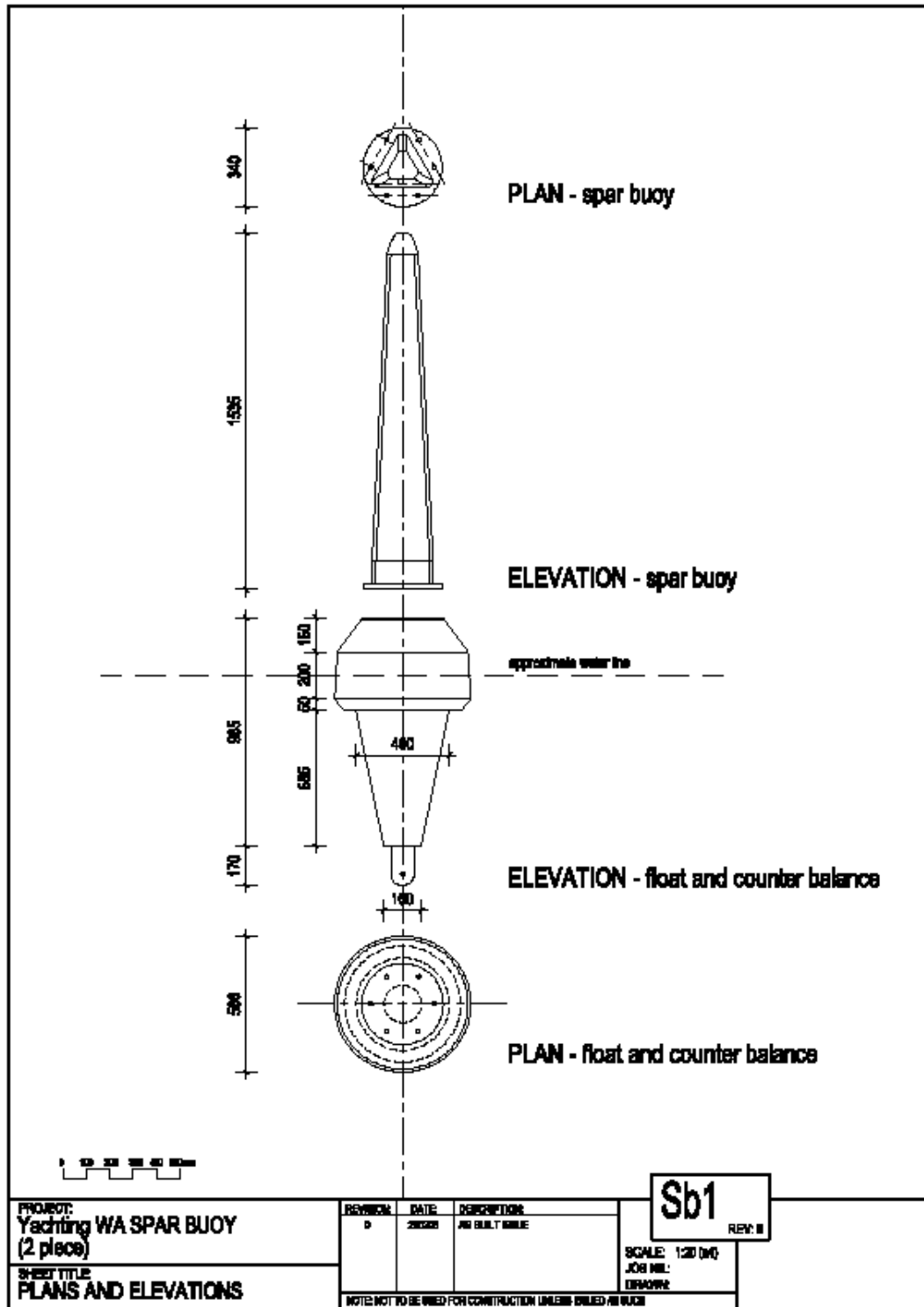
NAVIGATIONAL AND RACING MARKS

Page 3 of 3

| NAME | No. | ROUNDING | DESCRIPTION | COORDINATES | VISUAL POSITION | CLUB |
|------------------------|-----|----------|--|-----------------------------|--|-------|
| NYC Start Buoy | 39a | | | 31:59.80 S 115:51.13 E | E – Extension Thelma St | NYC |
| Outer Dolphin | 17 | P | | | | DoT |
| Parker Buoy | 17 | P/S | Square post, foam, orange | 31:59.93 S 116:46.80 E | | RFBYC |
| Pelican Buoy | 44b | S | | | S - Eastern side of Sea Scouts & Old Majestic site NE - 100m north east MBSC ramp | MBSC |
| PFSYC Outer Start Mark | 32a | P | | | | PFSYC |
| Pt Resolution Spit | | | Spit post, steel white, top mark, light | | | DoT |
| Pt Roe Spit | | P | Spit post, steel, top mark, red light | | | DoT |
| Poplar Buoy | 47 | P | 100mm PVC, white/red base | | S - Rocks Spit & Canning Bridge NE - Quarry Spit (1) & Taxation Building | RPYC |
| Print Buoy | 20 | S | Round, GRP, red | 31:59.55 S 115:50.38 E | E - Transit Foam Spit (18) & Sampson Spit (19), 80m from Foam Spit | SoPYC |
| Pt Walter Buoy | 12 | P | Round, GRP, white | | | EFYC |
| Quarry Buoy | 48 | S | | | NE - Quarry Spit (1) & Kings Park Memorial S - Rocks Spit (11) & Heathcote Tower | MBSC |
| Quarry Spit | 1 | S | | | | DoT |
| Resolution Day Buoy | 27a | P | | | | NYC |
| Robins Buoy | 59 | S | | 32:00.18 S 115:49.87 E | | SoPYC |
| Rocks Spit | 11 | | | | | DoT |
| Roe Buoy | 16 | P | Square post, foam, orange | | | RFBYC |
| RPYC Start Buoy | 44a | | | | | RPYC |
| St Annes Buoy | | P/S | | | | MYC |
| Sampson Spit | 19 | P/S | Spit post, timber, red fluro | | | DoT |
| Sanders Buoy | 99 | S | | 32:00.500 S 115:49.003 E | | RPYC |
| Scotch Spit | 57 | S | Spit post, steel, white, top mark | | | DoT |
| Sea Scouts Buoy | | | | | | MYC |
| Signet Buoy | 53A | P | | 31:59.06 S 115:50.04 E | | PDSC |
| Smith Buoy | 35a | P | | 32:00.84 S 115:48.11 E | | RFBYC |
| SoPYC Start Buoy | | P | | | 150m off SoPYC start box | SoPYC |
| Springs Buoy | | S | | | | MYC |
| Squadron Buoy | 37 | P | | 32:00.93 S 115:48.99 E | N - Dalkeith Spit (28) & UWA Tower E – Extension Nairn St | PFSYC |
| Squadron Spit | 31 | S | | | | DoT |
| Suicide Buoy | | P/S | | | | MYC |
| Suicide Buoy | 13 | P | | | | RFBYC |
| Tawarri Spit | 32 | P | Spit post, timber | | | DoT |
| Thelma Buoy | 67 | P | | 31:59.80 S 115:51.13 E | | SoPYC |
| University Buoy | 46 | S | | 31:58.28 S 115:49.38 E | | PDSC |
| University Spit | 13 | | | | | DoT |
| Unnamed Spit | 29 | | Spit post, timber | | Adjacent to NYC | DoT |
| West Pt Walter Spit | 53 | P/S | Spit post, steel, white, top mark, light | | | DoT |
| Waratah Day Buoy | | | | | | NYC |
| Waterstrom Spit | | S | Spit post, timber, red fluro | | | DoT |
| Weaver Buoy | 68 | P | | 32:00.42 S 115:51.13 E | | SoPYC |

APPENDIX B

APPROVED DESIGN of a CLUB MARK
 (Race Rounding Marks as Approved by *Department of Transport (DoT)* –
 Marine Operations, and Navigation Safety) as adopted by
 Yachting Western Australia (YWA)



APPENDIX C

YWA SWAN RIVER RACING COMMITTEE

APPLICATION FOR SPECIAL/RECURRING EVENTS:

Applications must be submitted no later than the Monday prior to the meeting (other than the April meeting)

Application to be submitted in accordance with the application closing dates listed in the Year Book

Class Associations should make application through the Club hosting/conducting the event.

NAME OF EVENT:

CONDUCTING CLUB:

CLASS: APPROX NO: OF BOATS:

CONTACT NAME: PHONE: (B) (H)

| DAY | DATE | START TIME | APPROX FINISH | COURSE/AREA: (Use abbreviations) |
|-------|-------|------------|---------------|-------------------------------------|
| | | | | |
| | | | | |
| | | | | |
| | | | | |
| | | | | |
| | | | | |
| | | | | |
| | | | | |
| | | | | |

ABBREVIATIONS: Club Course (CC), Olympic Course (OC), Special Course (SPC), Windward/Leeward (WL)
Matilda Bay (MB), Melville Water East/West (MWE/MWW), Freshwater Bay (FB)

ATTACH DETAILS FOR SPECIAL COURSE

RESTRICTION: Recurring Event approvals are valid for the summer season EXCEPT during designated Special Event periods - i.e. Nationals Season / Labour Day Long Weekend / Easter Weekend. Any event conducted during these periods is subject to Special Application.

SIGNED: CLUB SECRETARY: DATE:

FOR YWA OFFICE USE ONLY

APPROVED/

AS AMENDED: DATE: